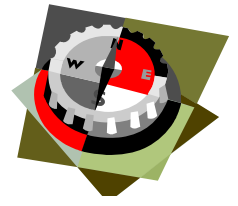




THE DPN ADVANTAGE



A Monthly Newsletter from the Disability Program Navigator

Vol. 1, Issue 3

March 2005

Up and Coming

Workshop Reminder

Just a little reminder for those who will be attending the conference in Sacramento

March 29, 30, 31, 2005

“Building Employment Opportunities for Individual with Disabilities”

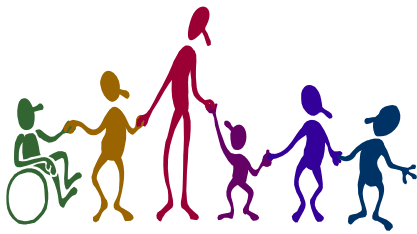
Registration begins at 9:00am on Tuesday; the Session begins at 1:00pm. @ The Double Tree Hotel

Any Questions
Please Contact the “DPN”
Disability Program Navigator
Toni Costales-Servin
(530) 822-5120 X 3052
tcostales-servin@ncen.org



Have a VOICE!

"Don't let what we cannot do interfere with what we can."



Do you have a cartoon, a motivational thought or saying? Please share your encouragement and we will try to put it in the next issue. Send to the below contact.

Headliner

Adult Learning Disabilities

The impact of learning disabilities is life long. The issues that made school work so challenging as a child crop up again in the workplace and even in our homes. Paper work, reports at work, keeping up with bills and helping our children with their homework can be a struggle.

Whether you grew up knowing you had a learning disability and received special education services, or you have struggled with learning difficulties without ever knowing exactly what your problems were, you are probably now in command of a number of techniques that make life easier. Over the years, you have figured out ways to get and keep track of the information you need, and developed systems for helping you get and stay organized. Here you can find even more avenues to success at work, in your relationships, and in the community.

Workplace Issues

- [Self-Advocacy in the Workplace](#): Tips for becoming a good self advocate plus sample accommodations. For the [Full article](#) click on “Full article” link or go to <http://www.idanatl.org>

Ask The Experts



QUESTION:

“Should a person with a learning disability tell a potential employer?”



ANSWER:

The more appropriate question is not whether to tell or not, but rather the consequences of *not* telling. Can the person do the job without accommodations? If the answer is no, consider the following:

- How severe is the disability?
- How much does the disability conflict with the needs of the job?
- How open is the employer to providing accommodations?
- Does the workplace have a union and what is their position in supporting a person with a learning disability?

Got Internet?

Useful Web Sites

[Merriam-Webster Online Dictionary & Thesaurus](#)

www.m-w.com

This is a great and useful site for those of us who might have some difficulty with spelling and sounding out words. The M-W site has you enter a word as you think it would be spelled, push enter and you get a choice of words to choose from. Then you have the option of clicking on the word to get the definition and hear it pronounced.

CONTACT: Toni Costales-Servin (530) 822-5120 x 3052 Email: tcostales-servin@ncen.org