

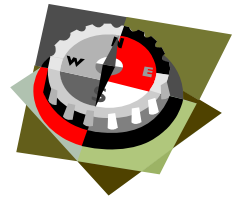


THE DPN ADVANTAGE

A Monthly Newsletter from the Disability Program Navigator

Vol. 1, Issue 5

May 2005



Up & Coming

Headliner

Ask the Experts

Workshop

The workshop that we have all been waiting for...

Psychiatric Disabilities

June 30th, 2005

@

The Sutter County Superintendent of Schools Office

10:00 am to 2:30 pm

Lunch will be provided

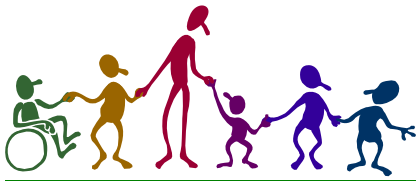
Presented by Los Angeles Employability Partnership, Creator of the LEGACY program.

Please RSVP by June 1, 2005

Any Questions
Please Contact your "DPN"
Disability Program Navigator
Toni Costales-Servin
(530) 822-5120 X 3052
tcostales-servin@ncen.org

"The Vision"

**"You must be the change you wish to see in the world."
Mohandas K. Gandhi**



Do you have a cartoon, a motivational thought or saying? Please share your encouragement and we will try to put it in the next issue. Send to the contact below.

"LEGACY" Training

Legacy is a training program to equip One Stop staff and other service providers with the skills needed to provide high quality of services to persons with disabilities.

Legacy Training Includes:

- ◆ Online courses available via the Internet www.employ-ability.org
- ◆ Live classroom training led by Certified Legacy Facilitators.

This training will also enable you to acquire new skills to help you advance your career. Through Legacy, you can earn certification as a Disability Services Specialist (DSS).

How Many Modules are in the Online Training?

LEGACY-I consists of 8 online modules:

L101: One-Stop Access for Persons with Disabilities

This is a foundation module that must be completed first, before any other modules. In this module, you will learn skills in six key areas:

- Identifying and overcoming disability-related barriers to services & employment
- Understanding basic California (FEHA) and federal (ADA) disability law
- Etiquette and communications considerations
- Addressing privacy issues
- Providing reasonable accommodations to access One-Stop services; and
- Assisting employers in providing reasonable accommodations.

After completing L101, you can then complete a series of modules that address seven major types of disability (these can be completed in any order):

- L102: Cognitive Disabilities
- L103: Mobility Impairments
- L104: Communications Disorders
- L105: Vision Impairments
- L106: Psychiatric Disabilities
- L107: Substance Dependence
- L108: AIDS/HIV & Major Illness

A description of each module is provided in the introduction section of that module.



QUESTION:

"What is a reasonable accommodation?"

Answer:

Reasonable accommodation is any modification or adjustment to a job or the work environment that will enable a qualified applicant or employee with a disability to participate in the application process or to perform essential job functions. Reasonable accommodation also includes adjustments to assure that a qualified individual with a disability has rights and privileges in employment equal to those of employees without disabilities.



Got Internet?

Useful Web Sites

Employ-Ability

www.employ-ability.org

The *EmployABILITY* Partnership is a collaboration of service professionals working together to help people with disabilities find jobs, build careers, and to assist the employers who hire them.

This is a great site for those of us that could use some help in accessing resources and providing services that empower job seekers with disabilities to achieve their highest career growth potential.